

OVERVIEW

What is Land IQ ET?

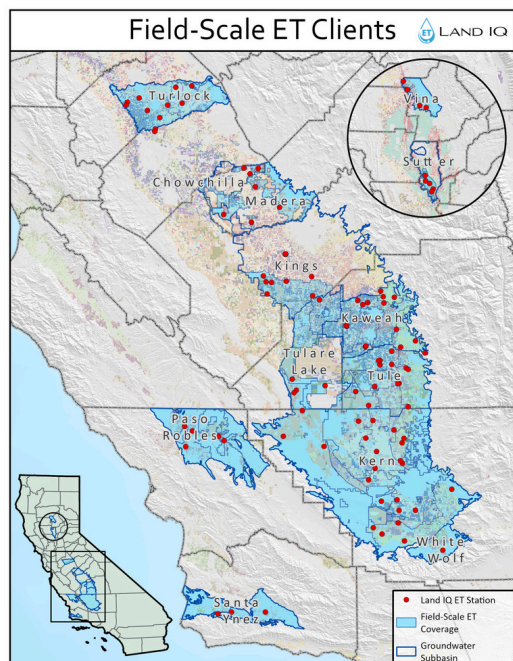
Land IQ ET is a data driven model that was developed for detailed, field-scale water use estimation. Water use estimation is calculated as evapotranspiration (ET), or the amount of water consumed by the plant and soil through evaporation and transpiration.

How does Land IQ ET determine field-level ET?

A rich set of ground measurements from approximately 95 Land IQ and other monitoring field stations is used to generate hourly ET data, which are then used as dependent variables in the modeling process. The field data are used to calibrate remotely sensed models for actual ET and to extrapolate those actual ET measurements across all fields to generate a complete estimate of monthly ET by crop type by field. The Land IQ ET model is unique because it models at the field scale and incorporates real time climatic and environmental station data, high-accuracy land use data, permanent crop age, and agronomic practices of modern cropping systems.

What is the difference between consumed water and applied water?

The amount of water applied to the field can be measured by gauges or meters; however, the amount consumed is what is used by the crop. The remaining water is usually stored in the soil profile or returned to the groundwater system and is a function of irrigation efficiency and management.



How does Land IQ ET compare to other remote sensing models?

The Land IQ ET model was developed for detailed, field-scale water use tracking. It uses a network of robust ground station data and direct image analysis to interpret image data. The Land IQ ET model is differentiated from other models by the following:

- **Data-driven** - The data driven approach makes the model completely objective. There is no need to hand-pick calibration pixels, as required in other models, which can introduce uncertainty, depending on an analyst's knowledge and experience.
- **Ground truth distribution/validation data** - The Land IQ model integrates data from repeated and rigorous ground truth weather stations (currently 95). Field stations are distributed to correspond with the range and dominant crop types in the service area and are continuously monitored via telemetered systems to detect inconsistencies in collection or outages. Field station data is key for model calibration and to validate model accuracy.
- **Scale** - Modeling is performed at the field level; thus, results can be aggregated to any larger unit of analysis desired.
- **Remotely sensed imagery** - Land IQ ET uses available remotely sensed images (Landsat 8 and 9, Sentinel, other purchased imagery, if needed). Typically, the model uses up to three times the imagery as compared to Landsat alone.
- **Integration of agronomic features of modern cropping systems** - Unlike other methods, the Land IQ land use data is derived from and guided by our understanding of agricultural systems, landscape processes, production systems, and crop phenology. In addition to basic land use data, the Land IQ ET model also considers and incorporates permanent crop age, permanent crop density, and unique field conditions including irrigation method and management.

Who is using Land IQ ET?

Land IQ ET was initially developed for use in the Semitropic Water Storage District (SWSD). Since 2016, in addition to SWSD, the organizations utilizing Land IQ ET have grown to cover over 3.5 million acres across Butte, Fresno, Kern, Kings, Merced, San Luis Obispo, Santa Barbara, Stanislaus, Sutter, and Tulare Counties including:

- Over 40 Groundwater Sustainability Agencies (GSAs) or Irrigation Districts
- Covering approximately 35 - 40 crop types
- Utilizing multiple water sources



GEOGRAPHIC & TEMPORAL SCALE

What is the scale of the analysis?

The primary unit of analysis by Land IQ ET is the field. With this granular approach, the results can be “rolled up” to any unit desired such as parcel level, county, irrigation district, GSA or groundwater basin.

What is the data source for field boundaries?

Land IQ ET conducts specialized crop mapping efforts for each GSA/District. This mapping is similar to the land use data developed by Land IQ for the California Department of Water Resources (DWR) as required by the Sustainable Groundwater Management Act (SGMA). These data are provided along with the consumed water from the same field as a complete deliverable to the client.

Utilizing remote sensing technologies and statistical and temporal analysis methods, Land IQ’s spatial classification of crop types exceeds 97% accuracy. Thus, the land use that drives consumed water by crops is highly accurate and forms one of the foundations of the accurate ET results.

At what interval is the data delivered?

Results are delivered within approximately 30 days of the end of the previous month, allowing the GSAs/irrigation districts to provide growers with critical decision-making tools, on a monthly basis, for managing water use through the growing season.

In response to grower requests, Land IQ has developed a daily ET product that ultimately reconciles with the proven and trusted 30-day value. This daily product allows growers to make refined water management decisions.

SATELLITE DATA

What satellite data is used for the Land IQ ET remote sensing models?

Land IQ ET uses multiple remote sensing images including:

- Landsat 8 and 9 (30 m, every 16 days)
- Sentinel (10 m, every 5 days)

Satellite data are screened for cloud cover and corrected for the effects of terrain or different topographic positions on reflectance.

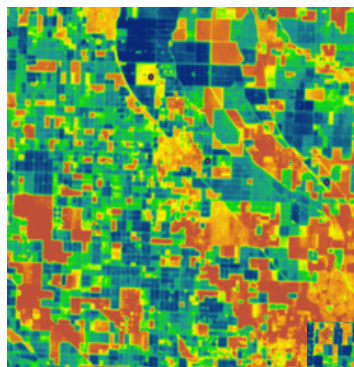
How does Land IQ address cloud or smoke cover?

Because 8 to 10 images are used (in comparison to 1 or 2 images if only Landsat were used), there is more opportunity to capture cloud/smoke free days. In the case of cloud/smoke cover, data is screened for the cloud/smoke cover and the terrain is corrected.

When cloud/smoke cover does restrict image analysis, Land IQ can rely on actual ET measurements from the network of field stations. Therefore, continuous field-by-field actual ET is consistently produced.

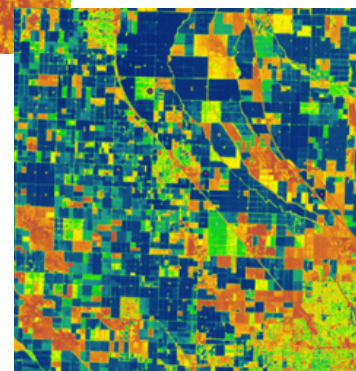
How is satellite imagery used in the Land IQ ET model?

Remotely sensed satellite imagery of the service area is collected on all available cloud free overpass dates within each month. For each station, spectral features such as single band information, vegetation indices, and surface temperature are extracted and combined for the models. For daily and monthly models, the features are related to measured actual ET to build models that are applied to the entire area for daily and monthly actual ET image calculation. Generally, up to four cloud-free Landsat 8 and 9 images and up to six Sentinel 2 images are used for monthly actual ET estimation. Applying more daily satellite imagery captures more of each field’s variation, which provides more accurate monthly actual ET. The remote sensing analysis is conducted at these frequencies during each month to estimate ET and calibrate daily, time-resolved analysis for the year.



**Coarser ET Results
Using Landsat Only**

**Refined ET Results
Using Multiple
Imagery Sources**



GROUND TRUTH DATA

How is the ground truthing data used for calculating ET?

Land IQ uses ET-specific meteorological stations to determine the amount of energy exchanged between the land surface and the atmosphere. All Land IQ stations follow the same surface energy balance approach, defined by the following equation:

$$R_{net} - G - H - \lambda E = 0$$

Where:

- **R_{net}** is the net radiation that accounts for both incoming and outgoing solar and terrestrial radiation.
- **G** is the surface soil heat flux and is derived from changes in soil temperature and moisture.
- **H** is the sensible heat flux measured as the exchange of heat between the plant canopy and surrounding atmosphere.
- **λE** is the latent heat flux, where λ is the latent heat of vaporization and E is the evapotranspiration term in plant systems or evaporation in open water or bare soil surfaces.

How does Land IQ obtain ground truthing data?

Land IQ ET uses a combination of instrument types to capture the range of data needed for ground calibration. Land IQ ET stations include full eddy covariance stations and improved surface renewal stations. All stations are placed appropriately to collect representative results and to avoid disruption in wind movement that introduces error in data collection.

Where are the stations currently located?

The Land IQ network currently consists of 95 stations. The stations are distributed across Butte, Fresno, Kern, Kings, Merced, Madera, San Luis Obispo, Santa Barbara, Stanislaus, Sutter, and Tulare Counties.



Land IQ Weather Station

How often are the stations maintained?

Land IQ performs station maintenance at least monthly, if not more frequently.

How are the locations for stations determined?

The quantity and location of stations are driven by crop distribution. Crops that dominate the landscape are instrumented so that differences in age, canopy and geography are adequately characterized. Individual fields are selected based on their size (large acreage blocks (>40ac) are preferred) and representation of the common surface conditions in the area. Site selection criteria include:

- Crop type
- Field uniformity
- Topography
- Representative production practices (e.g. irrigation and crop management)
- Predominant wind directions
- Soil types
- Spatial distribution within a particular area of interest

How does Land IQ consider different field management techniques?

In our initial assessment of a new area of interest, the Land IQ land use data, which are derived from and guided by our understanding of agricultural systems, landscape processes, production systems, and crop phenology, are used to determine the most expansive crop types for placement of the stations. In addition to basic land use data, the Land IQ ET model also considers and incorporates permanent crop age, permanent crop density, and unique field conditions including irrigation method and management. Additionally, we have an ongoing working relationship with the University of California system and cooperating growers to determine effects of variables like row orientation, the amount of applied irrigated water, as well as irrigation and pruning techniques.

How are the data transmitted?

Data stations are fully telemetered by cellular communication systems to Land IQ servers. Data collection incorporates data flagging protocols to identify any inconsistencies or outages. A thorough QA/QC effort is conducted on all field collected data prior to using in remotely sensed analysis.

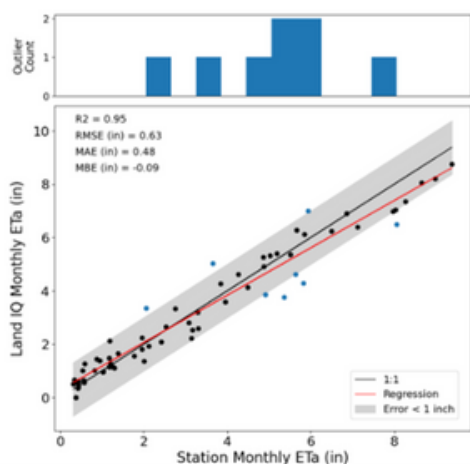


ACCURACY

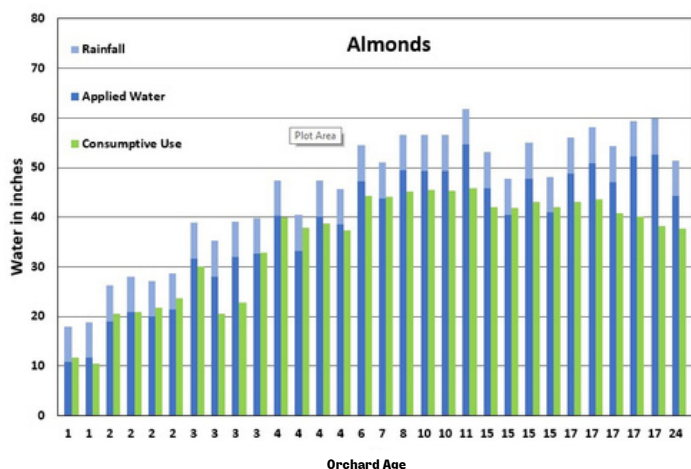
How accurate is the Land IQ ET model?

Land IQ uses multiple methods for evaluating model accuracy. One method is independent validation of model results, using data from two stations per month for the past 3.5 years. The stations are randomly selected and excluded from model calibration data.

Independent Validation Comparison of Monthly ET from Oct 2021 - Sep 2024



The second method of evaluating model accuracy is comparing model results to growers-applied water records. Grower irrigation flowmeter data were obtained for over 170 blocks (e.g., almonds, citrus, pistachios) in the San Joaquin Valley for WY 2022 – 2024 and were compared to ET model results. To evaluate accuracy, the total received water for the orchard (irrigation plus precipitation) was compared against model ETa.



ADVISORY COMMITTEE

Land IQ has engaged emeritus UC Cooperative Extension Agents to perform independent review of our monthly results including:

- Blake Sanden, M.S., UCCE Irrigation & Agronomy Farm Advisor Emeritus, Kern County
- Allan Fulton, M.S., UC Irrigation and Water Resources Advisor, Emeritus, Kings and Tehama Counties

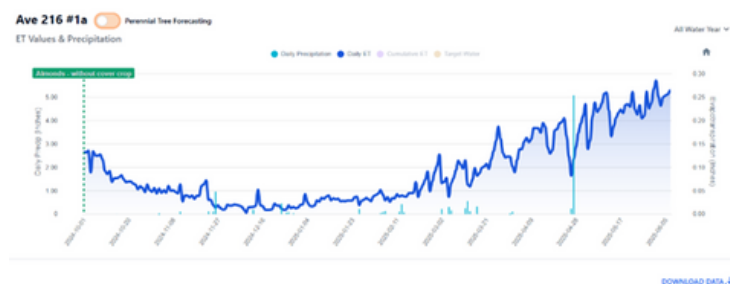
In addition, Land IQ formed an independent advisory group that meets one to two times per year for independent review:

- Dan Howes, PhD, Cal Poly, San Luis Obispo
- Daniele Zaccaria, PhD, UC Davis
- Rick Snyder, PhD, UC Davis, Emeritus
- Khaled Bali, PhD, UC ANR
- Pasquale Steduto, PhD, UN-FAO
- Morey Orang, PhD, DWR

DAILY IRRIGATION MANAGEMENT

Responding to grower and GSA priorities, which include daily ET and precipitation results, Land IQ developed a grower-level, field-by-field, daily ET product portal in which a grower or operator only views their field results. To complement this, Land IQ also developed a manager level-portal in which the GSA/district manager can view all fields. The full operational capability of this tool will be launched in the fall of 2025.

For consistency, the results of the daily product will match the proven results of the 30-day ET results that are currently provided to clients. The goal is to allow growers to track their water use daily in relation to a district-, GSA-, or grower-defined threshold. The grower can then adjust water management actions on a near real time basis to approach, but not exceed, pre-defined thresholds.



Daily Irrigation Management Tool



DATA USAGE

How can the Land IQ ET data be used?

The data can be used for development and implementation of Groundwater Sustainability Plans and to track progress towards reaching sustainability, complying with groundwater allocations, improving overall groundwater management, modeling, billing growers on water consumed, instead of water delivered, and to view historic results for future water management.

Does Land IQ have a platform for viewing data?

Yes, Land IQ has a data visualization platform (see below). Depending on the needs of the water manager, a platform can be customized to range from single user to multiple users with unique log-in and viewing capabilities.

Can the data be used for billing purposes?

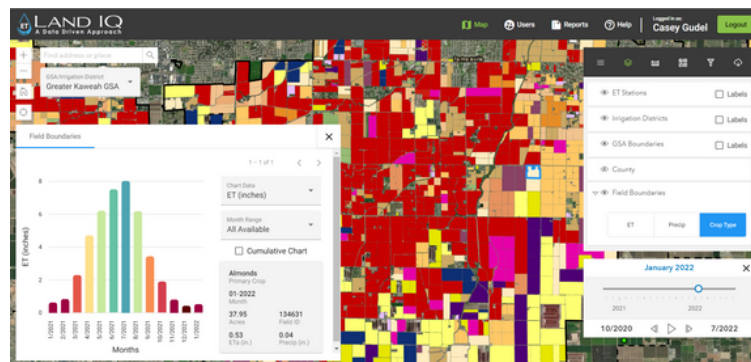
Yes, Land IQ ET results are increasingly used for billing water users for the water consumed instead of water delivered, the former being the true amount of water lost from an agricultural system.

Can the data be used for irrigation scheduling?

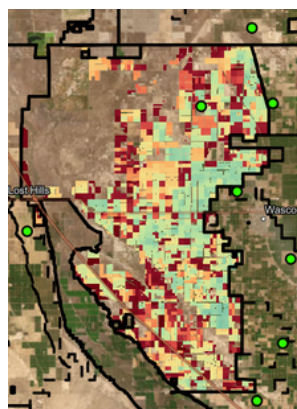
The traditional 30-day ET data is not intended for day-to-day irrigation scheduling, however the new daily irrigation management tool can be used for this purpose.

Can the data be used for tracking water allocations?

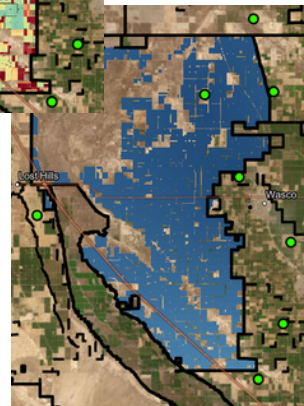
Yes, because of the granularity and accuracy of the analysis water managers can track and reconcile monthly consumed water use by grower, parcel, or farm unit depending on the level of granularity needed. Additionally, the new daily irrigation management tool allows growers to track their own usage against a threshold set by themselves, an irrigation district or GSA.



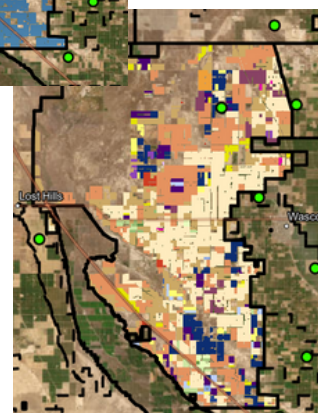
Land IQ ET Platform



Field-Level ET



Field-Level Precip



Field-Level Crop Type



Allocation Tracking